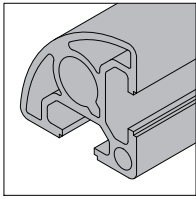
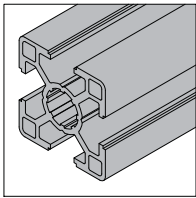


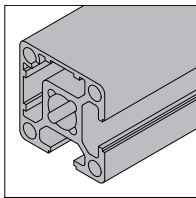
Strut Profile PG30



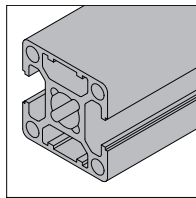
PG30 30x30 R90 2 slots



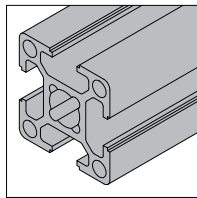
PG30 30x30 4 slots Light



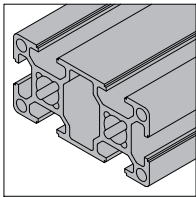
PG30 30x30 2 slots TypeA



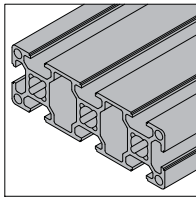
PG30 30x30 2 slots TypeB



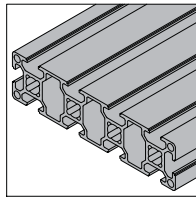
PG30 30x30 4 slots



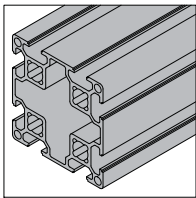
PG30 30x60 6 slots



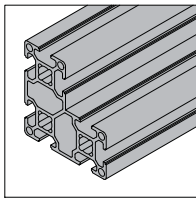
PG30 30x90 8 slots



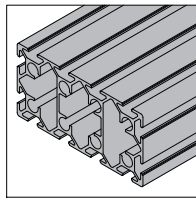
PG30 30x120 10 slots



PG30 60x60 8 slots



PG30 60x60 L 8 slots

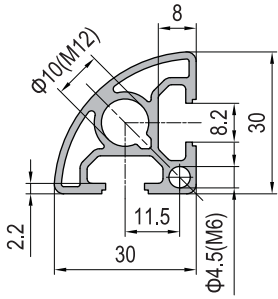


PG30 60x120 12 slots

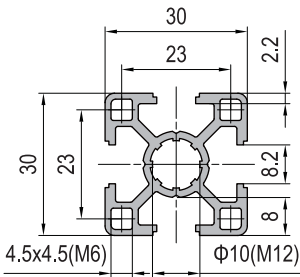
Strut profile PG30 featuring 8mm T-slot is designed for constructing medium weight assemblies such as trolley, work station, partition, display frames etc. The 30x60x60 profile is designed for constructing showcases and shelving. Radius profile are also available to make the assemblies more attractive. Connector selection: anchor connector, die cast bracket, angle profile bracket, inner bracket, linear bar connector etc.

Strut Profile PG30

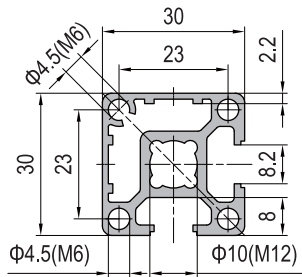
PG30 30x30 R90 2 slots



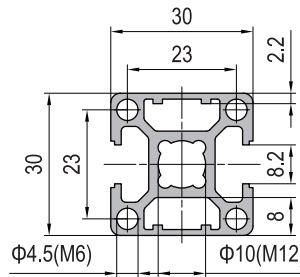
PG30 30x30 4 slots Light



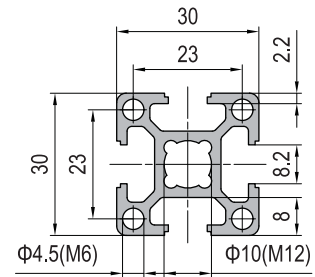
PG30 30x30 2 slots Type A



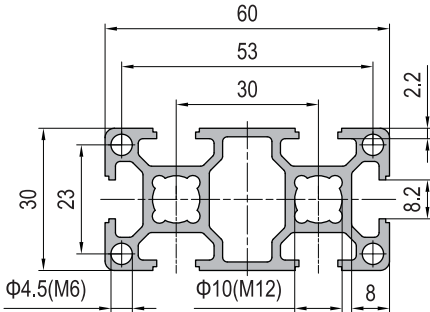
PG30 30x30 2 slots Type B



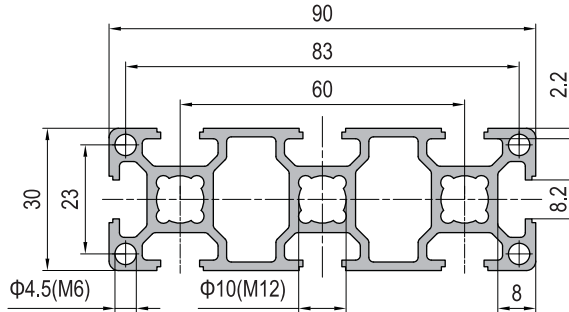
PG30 30x30 4 slots



PG30 30x60 6 slots



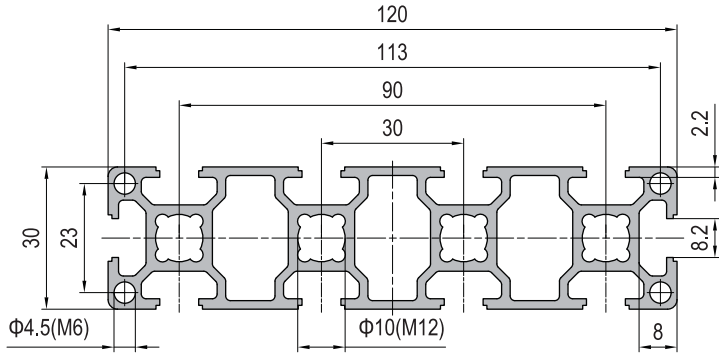
PG30 30x90 8 slots



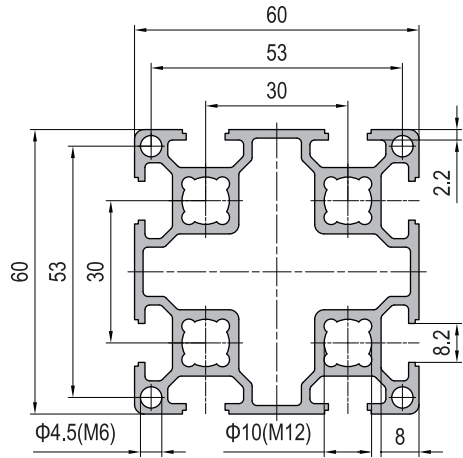
Description	Moment of Inertia $I_x(\text{cm}^4)$	Moment of Inertia $I_y(\text{cm}^4)$	Moment of Resistance $W_x(\text{cm}^3)$	Moment of Resistance $W_y(\text{cm}^3)$	Mass (kg/m)	Part No.
Strut Profile PG30 30x30 R90 2 slots	2.5	1.6	1.2	0.9	0.8	1.11.30.030030.R90.02
Strut Profile PG30 30x30 4 slots Light	2.6	2.6	1.8	1.8	0.8	1.11.30.030030.04L
Strut Profile PG30 30x30 2 slots Type A	2.9	2.9	2.0	2.0	0.9	1.11.30.030030.02A
Strut Profile PG30 30x30 2 slots Type B	2.8	3.2	1.9	2.1	0.9	1.11.30.030030.02B
Strut Profile PG30 30x30 4 slots	2.9	2.9	2.0	1.9	0.9	1.11.30.030030.04
Strut Profile PG30 30x60 6 slots	5.3	19.9	3.5	6.7	1.6	1.11.30.030060.06
Strut Profile PG30 30x90 8 slots	7.7	62.0	5.1	13.8	2.2	1.11.30.030090.08

Strut Profile PG30

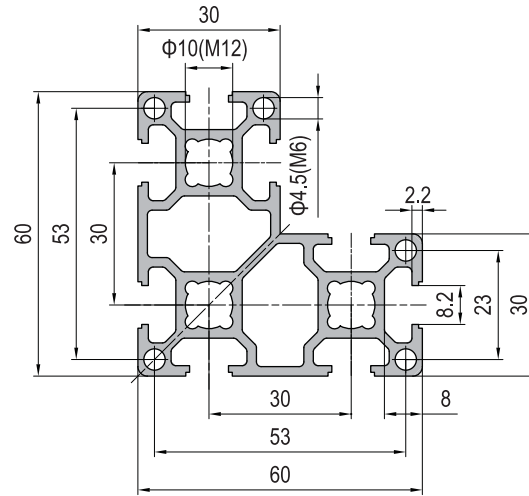
PG30 30x120 10 slots



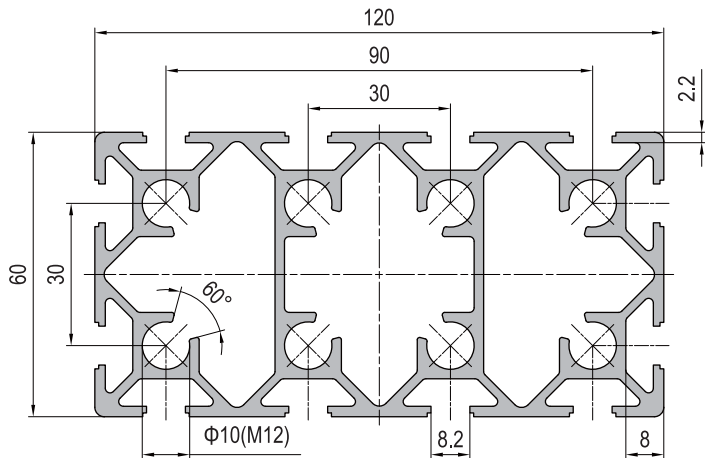
PG30 60x60 8 slots



PG30 60x60 L 8 slots



PG30 60x120 12 slots



Description	Moment of Inertia $I_x(\text{cm}^4)$	Moment of Inertia $I_y(\text{cm}^4)$	Moment of Resistance $W_x(\text{cm}^3)$	Moment of Resistance $W_y(\text{cm}^3)$	Mass (kg/m)	Part No.
Strut Profile PG30 30x120 10 slots	10.1	139.9	6.7	23.3	2.9	1.11.30.030120.10
Strut Profile PG30 60x60 8 slots	35.3	35.3	11.8	11.8	2.5	1.11.30.060060.08
Strut Profile PG30 60x60 L 8 slots	35.2	17.6	8.5	5.0	2.3	1.11.30.060060L.08
Strut Profile PG30 60x120 12 slots	74.7	252.6	24.9	42.1	4.8	1.11.30.060120.12